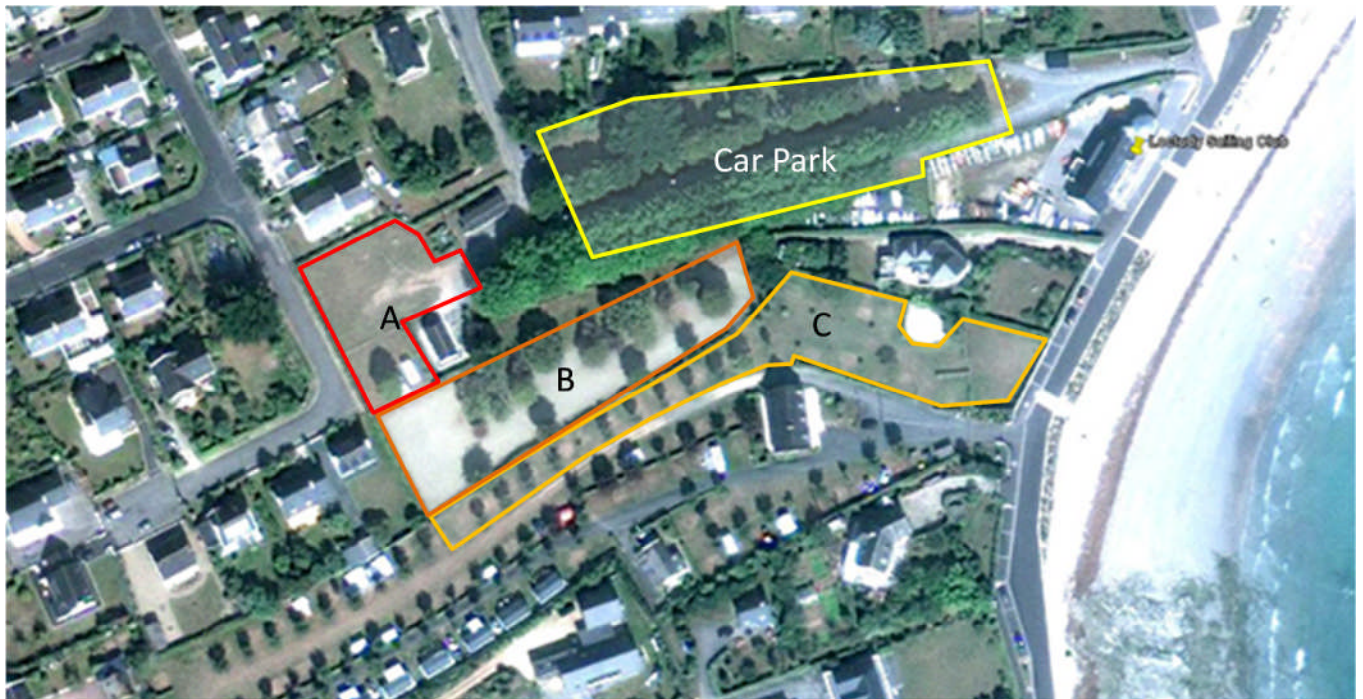


Accommodation and parking



Car Parking (area Car Park)

To the rear of the club is a large free car park which could accommodate the majority of the cars and small vans of the competitors. This is a free car park but is an open car park for general use.



Campervans (area A)

Adjacent to the car park is an area used by the local boules club, which can accommodate approximately 30 vans. The area is divided by a picket fence and has two tree stumps to the north east.



The boules club would be asked to provide electrical hook ups for the vans. Number to be confirmed

Water supply and chemical disposal to be agreed.

Area B

This is a free area

Can this area be used for campervans as well?



Camping (area C)

There is a municipal area adjacent to the club that may be available for camping. It is quite a long by fairly narrow strip which should be able to accommodate quite a lot of tents.



The area C has a long narrow section (as shown in the pictures above, but also a larger area close to the road – can this be used too?)

Washing and toilet facilities

The club has limited toilets and shower facilities (five showers in a cubical – male and three showers in a cubical – female)

There are additional public showers and toilets in the “Poste de Secours”